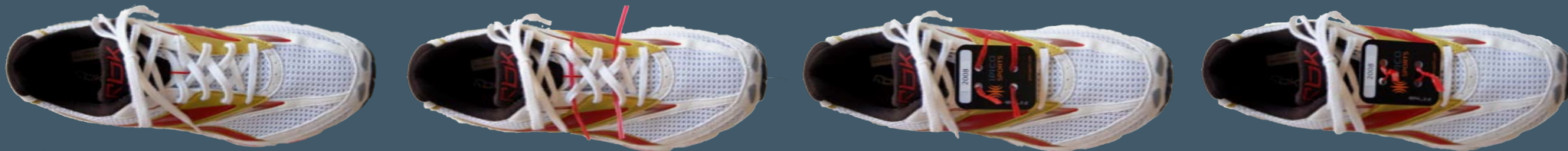


**PLEASE NOTE: WE HAVE ADDED A SHOE CHIP. PLEASE SEE INSTRUCTIONS BELOW:**



## Attaching your IPICO Sports Tag to your shoe.

*You must wear the IPICO Sports Tag to get an official finishing time. If you do not wear your IPICO Sports Tag then the system will not record you finishing and therefore we will be unable to provide you with a finishing time. NO TAG NO TIME!*



*When you cross the Finish line, we have teams of specially equipped helpers to remove the IPICO Sports Tag from your shoe – you do not need to do anything apart from following the volunteers instructions.*

### STEP 1

Loosen the laces of your running shoe.

### STEP 2

Thread the wire twist ties under the laces.

### STEP 3

Thread the IPICO Sports Tag onto the wire twist ties.

### STEP 4

Secure the IPICO Sports Tag by twisting the wire twist ties firmly together.

