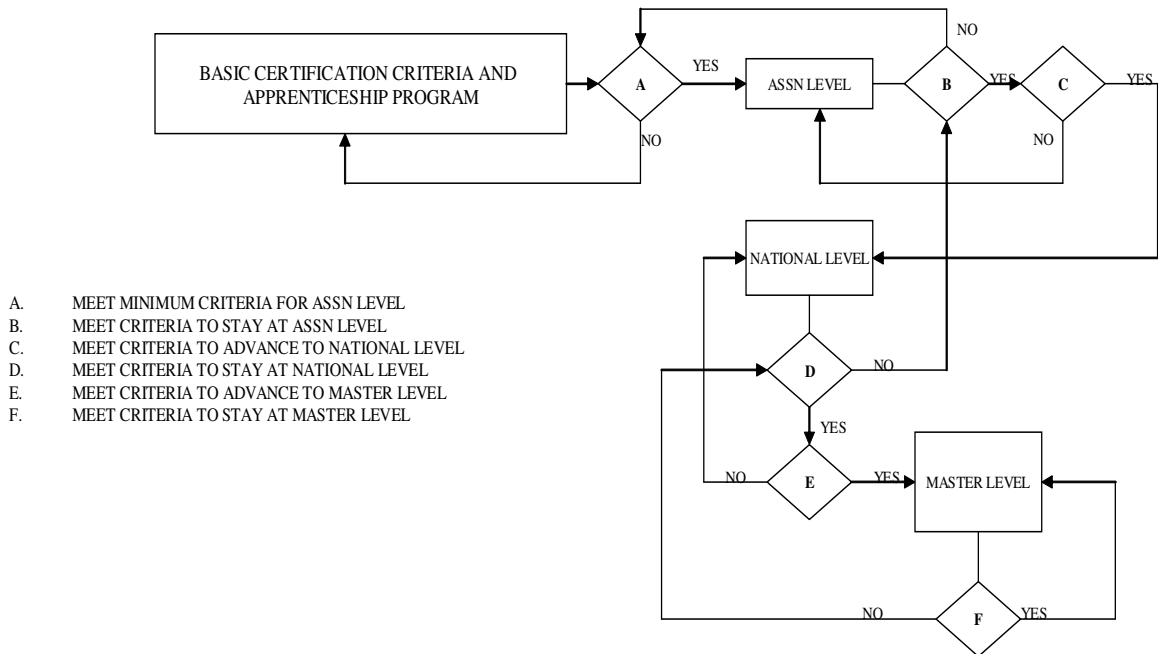


Appendix 4 – RACE WALK JUDGE CERTIFICATION PROCESS

This section identifies the recommended certification process for Race Walk Judges and Race Walk Officials.

ROADMAP TO RW JUDGING AND OFFICIATING CERTIFICATION AND ADVANCEMENT

The diagram below illustrates the path an individual should take to advance thru the levels of race walk judging and officiating. The individual requirements for each step are identified in the following tables.



BREAK OUT OF RW JUDGE & OFFICIAL ACTIVITIES

The table below identifies the activities that a Race Walk Judge and a Race Walk Official may perform at Race Walk events. An individual can be both a Judge and an Official but should not serve in both capacities during the same race.

ACTIVITY	RW JUDGE	RW OFFICIAL
JUDGE	YES	
RECORDER	YES	YES
DQ BOARD	YES	YES
JUDGE SEMINAR	YES	
JUDGE MENTOR/APPRENTICE	YES	
CHIEF JUDGE	YES	
LAP COUNTER		YES
AID STATION		YES
CARD COLLECTOR		YES
TIMER		YES
EVENT DIRECTOR		YES

DEFINED LEVELS OF RACES

- ALL COMERS MEETS, CLUB EVENTS SANCTIONED, CLUB EVENTS NOT SANCTIONED
- ASSOCIATION CHAMPIONSHIP
- REGIONAL CHAMPIONSHIP
- NATIONAL CHAMPIONSHIP
- INTERNATIONAL (Grand Prix, Pan Am Cup, World Cup, etc)
- INVITATIONAL (Open College or HS, HS Scholastic Championships.) (Same level as a Regional Championship)
- INTERNATIONAL TRIAL (Same level as a National Championship)

1. Earning and maintaining an Association Level Race Walk Judge rating

STEPS TO BECOME A CERTIFIED ASSOCIATION LEVEL RW JUDGE

- It is recommended that the potential Judge join USATF
- Participate in the basic Association Level Officials Clinic and take USATF Rules Review
- Attend a RW Judging & RW Officials Seminar and take USATF Association Level RW Test.
- Complete Apprenticeship (Within 12 Months)
- Formally apply for certification

RW JUDGE APPRENTICE PROCESS

- Work with a mentor Judge for a minimum of two races (1 Track, 1 Road). Demonstrate a working knowledge of RW Rules before proceeding to the next step.
- Work a minimum of two races as a non scoring judge. Demonstrate consistency with the judging panel. Continue mentoring process until consistency is achieved.

NOTE: A Multi Race Event will not count for more than 1 Race.

MINIMUM CRITERIA TO REMAIN AT ASSOCIATION LEVEL RW JUDGE

Within four (4) years the Association Level judge must:

- Judge at least 12 sanctioned events (8 or more within the home association)
- Judge at least 3 Association Championship level events in the home association.
- Be a Chief Judge in at least 2 All Comers Meet Level events (See Defined Levels of Races).

2. Earning and maintaining a National Level Race Walk Judge rating.

PROCESS TO ADVANCE FROM ASSOCIATION LEVEL TO NATIONAL RW JUDGE

In a period of two (2) consecutive years
(From the time of becoming an Association
Level Judge):

- Judge at least 10 sanctioned events (Six, or more, in the home association)
- Judge at least 2 association level championship events in the home association
- Judge at least 2 events outside the home association
- Be a Chief Judge in at least 2 All Comers Meet Level events (See Defined Levels of Races).

OR

In a period of four (4) consecutive years
(From the time of becoming an Association
Level Judge):

- Judge at least 18 sanctioned events (Ten, or more, in the home association)
- Judge at least 4 association level championship events in the home association
- Judge at least 4 events outside the home association
- Be a Chief Judge in at least 4 All Comers Meet Level events (See Defined Levels of Races).

MINIMUM CRITERIA TO REMAIN AT NATIONAL LEVEL RW JUDGE

In a period of four (4) consecutive years:

- Judge at least 15 sanctioned events (Eight, or more, in the home association)
- Judge at least 4 association level or higher events in the home association
- Judge at least 2 association level or higher events outside the home association
- Judge at least 1 event at Regional, or higher level
- Be a Chief Judge in at least 3 events at a Regional, or higher level (See Defined Level of Races).

3. Earning and maintaining a Master Level Race Walk Judge rating.

PROCESS TO ADVANCE FROM NATIONAL TO MASTER LEVEL RW JUDGE

In a period of four (4) consecutive years:

- **Judge at least 20 sanctioned events (Twelve, or more, in the home association)**
- **Judge at least 4 association championship level events, or higher, in the home association**
- **Judge at least 4 association championship level events, or higher, outside the home association**
- **Judge at least 6 Regional Level events, or higher**
- **Be a Chief Judge in at least 4 All Comers Meet Level events (See Defined Levels of Races)**
- **Mentor apprentice judges**
- **Work as a recorder, DQ Board Operator in a least 2 races**
- **Be an active Presenter at a RW Judging Seminar**

MINIMUM CRITERIA TO REMAIN AT MASTER LEVEL RW JUDGE

In a period of four (4) consecutive years:

- **Judge at least 20 sanctioned events (Ten, or more, in the home association)**
- **Judge at least 4 association level or higher events in the home association**
- **Judge at least 4 association level or higher events outside the home association**
- **Judge at least 6 events at Regional, or higher level**
- **Be a Chief Judge in at least 4 events at a Regional, or higher level (See Defined Level of Races).**
- **Mentor apprentice judges**
- **Work as a recorder, DQ Board Operator in a least 2 races**
- **Be an active Presenter at a RW Judging Seminar**

1. Earning and maintaining an Association Level Race Walk Official rating

STEPS TO BECOME A CERTIFIED ASSOCIATION LEVEL RW OFFICIAL

- It is recommended that the potential RW Official join USATF
- Participate in the basic Association Level Officials Clinic and take USATF Rules Review
- Attend a RW Judging & RW Officials Seminar and take USATF Association Level RW Test.
- Complete Apprenticeship (Within 12 Months)
- Formally apply for certification

RW OFFICIAL APPRENTICE PROCESS

- Work with experienced RW Officials for at least two races in at least 2 of the following capacities:
 - LAP COUNTER
 - AID STATION
 - TIMER
 - CARD COLLECTOR
 - RECORDER
 - DQ BOARD

NOTE: A Multi Race Event will not count for more than 1 Race.

MINIMUM CRITERIA TO REMAIN AT ASSOCIATION LEVEL RW OFFICIAL

Within four (4) years the Association Level official must:

- Officiate at least 12 sanctioned race walk events (4 or more within the home association)
- Officiate at least 6 Association Championship level, or higher events
- Officiate in at least 4 of the officiating capacities

2. Earning and maintaining a National Level Race Walk Official rating.

PROCESS TO ADVANCE FROM ASSOCIATION LEVEL TO NATIONAL RW OFFICIAL

In a period of two (2) consecutive years
(From the time of becoming an Association
Level RW Official):

- Officiate at least 8 sanctioned RW events (Four, or more, in the home association)
- Officiate at least 4 Regional level, or higher events
- Officiate at least 2 events outside the home association
- Officiate in at least 4 of the officiating capacities

OR

In a period of four (4) consecutive years
(From the time of becoming an Association
Level RW Official):

- Officiate at least 16 sanctioned RW events (Seven, or more, in the home association)
- Officiate at least 7 Regional level, or higher level events
- Officiate at least 4 events outside the home association
- Officiate in at least 5 of the officiating capacities

MINIMUM CRITERIA TO REMAIN AT NATIONAL LEVEL RW OFFICIAL

In a period of four (4) consecutive years:

- Officiate at least 14 sanctioned race walk events (6 or more within the home association)
- Officiate at least 6 Regional Championship level, or higher events
- Officiate at least 3 events outside the home association
- Officiate in at least 5 of the officiating capacities

3. Earning and maintaining a Master Level Race Walk Official rating.

PROCESS TO ADVANCE FROM NATIONAL TO MASTER LEVEL RW OFFICIAL

In a period of four (4) consecutive years:

- **Officiate at least 20 sanctioned RW events (Seven, or more, in the home association)**
- **Officiate at least 10 Regional level, or higher level events**
- **Officiate at least 6 events outside the home association**
- **Officiate in at least 5 of the officiating capacities**
- **Direct at least 3 events**

MINIMUM CRITERIA TO REMAIN AT MASTER LEVEL RW OFFICIAL

In a period of four (4) consecutive years:

- **Officiate at least 18 sanctioned race walk events (7 or more within the home association)**
- **Officiate at least 9 Regional Championship level, or higher events**
- **Officiate at least 5 events outside the home association**
- **Officiate in at least 5 of the officiating capacities**
- **Direct at least 2 events**

The following table provides is a summary of the recommended criteria for remaining at a current level and advancement to the next level as a RW Judge.

Minimum Event Participation	To remain at Assn Level Judge (4 yrs)	To Advance to National Level (2 yrs)	To Advance To National Level (4 yrs)	To Remain at National Level Judge (4 yrs)	To Advance to Master Level (4 yrs)	To Remain at Master Level Judge (4 yrs)
Judge	12	10	18	15	20	20
Home Assn	8	6	10	8	12	10
Assn Champs Level, Home	3	2	4			
Chief Judge All Comers Meets	2	2	4			
Events Outside Home Assn.		2	4			
Assn Champ Level or Higher Events Home Assn				4	4	4
Assn Champ Level or Higher Outside Home Assn				2	4	4
Regional or Higher Level				1	6	6
Chief Judge Assn Level or Higher				3		
Chief Judge Regional Level or Higher					4	4
Mentor Apprentice Judges					Yes	Yes
Active Participant Judging Seminar					Yes	Yes
Recorder or DQ Board Operator					2	2