

## ACCOMMODATION UPDATE – APRIL 23, 2009

**3 months to go for World Championships in Lahti – book your hotel now!**

**Hotels available (prices are per person / night incl. breakfast):**

### **Downtown hotels**



**Cumulus Hotel Lahti - SGL 135 €, DBL 90 €/person**

Hotel Cumulus is a pleasant hotel right in the downtown. It is situated next to the best shopping places and restaurants. Cosy restaurant for dining and drinks and sauna department in the hotel. 12 min. walk to the main stadium.



**Messilä Manor Hotel - DBL 73 €/person, 4 persons cabin 65 €/person**

Traditional Messilä offers manor milieu accommodation in a hotel, cabins and sheds. There are versatile program and exercise routes on the area as well as a WMA official camping area with a guest harbour. 15 min shuttle transfer to the main stadium.

### **Hotel Resorts 30 minutes from Lahti**



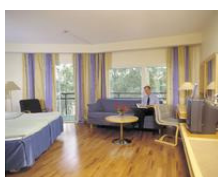
**Vierumäki Holiday Resort - SGL 125 €, DBL 80 €/person, TRL 75 €/person**

The Vierumäki Holiday Resort is a dream come true for master athlete. The area with golf courses, indoor and outdoor sports facilities, spa and Finnish lakes and forests offers accommodation and restaurants for many tastes. 30 minutes shuttle transfer to the main stadium.



**Pajulahti Sports Resort – SGL 89 €, DBL or 4 bed room 64 €/person**

Pajulahti with its versatile exercising possibilities and various accommodation alternatives offers a very good housing alternative for masters. Pajulahti is located by a clear water lake in Nastola, 3 km from Nastola Sport Field. 30 minutes shuttle transfer to the main stadium.



**Hotel Kumpeli – SGL 110 €, DBL 68 €/person**

A pleasant holiday hotel Kumpeli is located at a beautiful spot, on the shore of the river Kymijoki. There are great tracking routes in the surrounding of the hotel. Hotel has a lookout restaurant and sauna department with a pool. All rooms with balcony and view to lake or to park. 30 minutes shuttle transfer to the main stadium



**Hotel Valo – SGL 93 €, DBL 63 €/person**

Classy and piece full Hotel Valo is located 2,5 km from Heinola downtown. Great tracking routes and beautiful park surround the hotel. Hotel is new and furnished in modern Scandinavian style. 30 minutes shuttle transfer to the main stadium.

### **Summer Hotels 30 minutes from Lahti**



**Opeko Summer Hotel – SGL 84 €, DBL 50€/person**

Opeko is located nicely in the small town center of Heinola, close to most restaurants, shops and guest harbour. Every room includes a toilet and shower. In every floor also a common room with a tv, fridge, coffee machine. 30 minutes shuttle transfer to the main stadium.



### **Salpaus Summer Hotel - 53 €/ person incl. half-board**

Salpaus Summer hotel is situated on a lake shore, in the beautiful country side of Asikkala. Accommodation in DBL rooms in apartments for 4 or 8 persons. In all rooms 2 beds, desks, chairs and wardrobes and a common space with a kitchenette, fridge, kitchen table and chairs or a sofa, bathroom with shower. 40 minutes shuttle transfer from the main stadium.



### **Hotel Tuulonen – DBL 55 €/person, TRL 48,3€/person**

The Hotel is operating in ABC Tuulos service station and shopping center. Most of the rooms are spacious double rooms suitable for 3 persons. The hotel is located 30 minutes drive from Lahti.

Half-board is available in most of the hotels in the list with additional cost. The Organizing Committee will provide a shuttle bus service in the Lahti Region.

### **Other accommodation**

- \* Guest Houses 30 minutes from Lahti, DBL 50-65 €
- \* Private accommodation, 43 € / person / night
- \* School housing, 25 € / person / night
- \* Camping, 30 € / caravan / night (official camping site with shuttle transfer)

### **How to book?**

1. Fill in the hotel booking form and send it to Lahti Travel by Fax +358 207 281 751 or by email [sales@lahtitravel.fi](mailto:sales@lahtitravel.fi).

2. After receiving a booking form, Lahti Travel will send you a confirmation that the booking is being handled. **Bookings are being handled in chronological order of received requests. Due to a big amount of received requests, the handling time is about 10 days.**

3. Lahti Travel will offer you a hotel based on your wishes. The booking must be confirmed in 14 days. When booking has been confirmed from the client, Lahti Travel will send an invoice. By cancellations, Lahti Travel reserves a right to charge 50 € as a cancellation Fee. In case of illness, the cancellation fee will not be charged.

The prices and beds stated here and on the web pages of Lahti Travel and World Masters Athletics Championships 2009 are only available by booking through Lahti Travel. Lahti Travel Ltd. is LOC:s city-owned partner for accommodation.

### **Minimum Stay in hotels 4 nights, Minimum Stay in private accommodation 7 nights**

Information about day trips and tours around Lahti region from the internet:  
[www.wma2009.org](http://www.wma2009.org) and [www.lahtitravel.fi](http://www.lahtitravel.fi)

Lahti Travel Ltd  
Rautatienkatu 22  
Finland -15110 Lahti  
tel. +207 281 750  
fax. +207 281 751  
[sales@lahtitravel.fi](mailto:sales@lahtitravel.fi)